



Quietspace® Panel

● Quietspace® Panel
in Nude Black

● Blum,
New Zealand

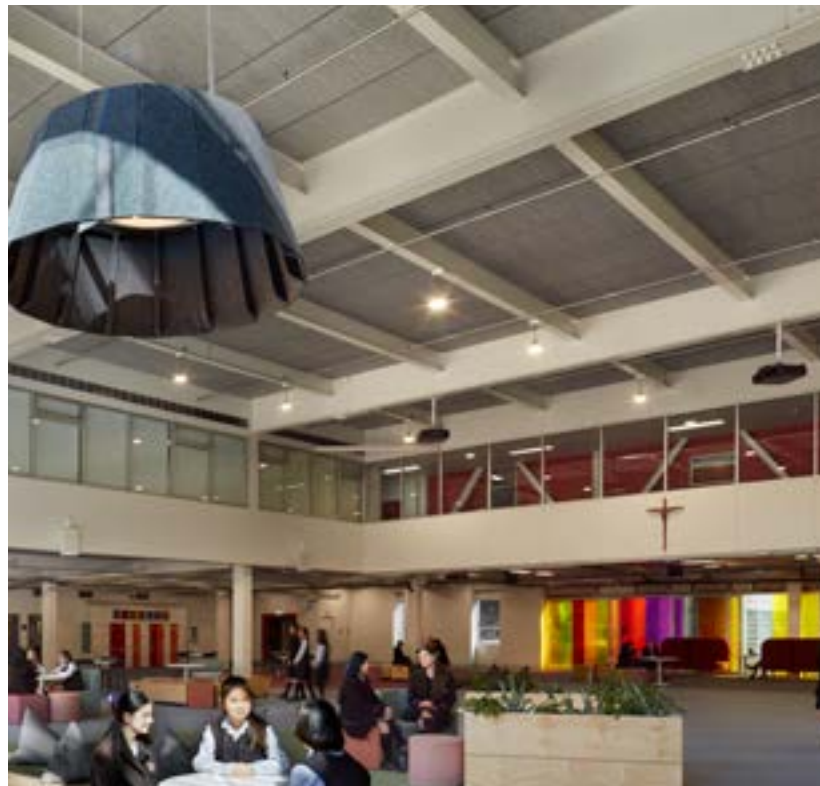


The strong silent type

Quietspace® Panel is a discrete, high-performance acoustic treatment engineered to absorb a minimum of 85% of the sound energy it meets—perfect for reducing reverberation and echo in spaces with high noise levels. Designed to blend into any interior environment, Quietspace Panel is available in black, white, or gray; for more colorful applications it can be laminated or overlaid with Vertiface®.

Quietspace Panel is made from 100% polyester fiber, with a hard, compressed face and cushioned backing to optimize the range of frequency absorption—available in 1” and 2” thicknesses to meet the requirements of your project.

To find out more about Quietspace Panel visit www.autexglobal.com



Features and benefits

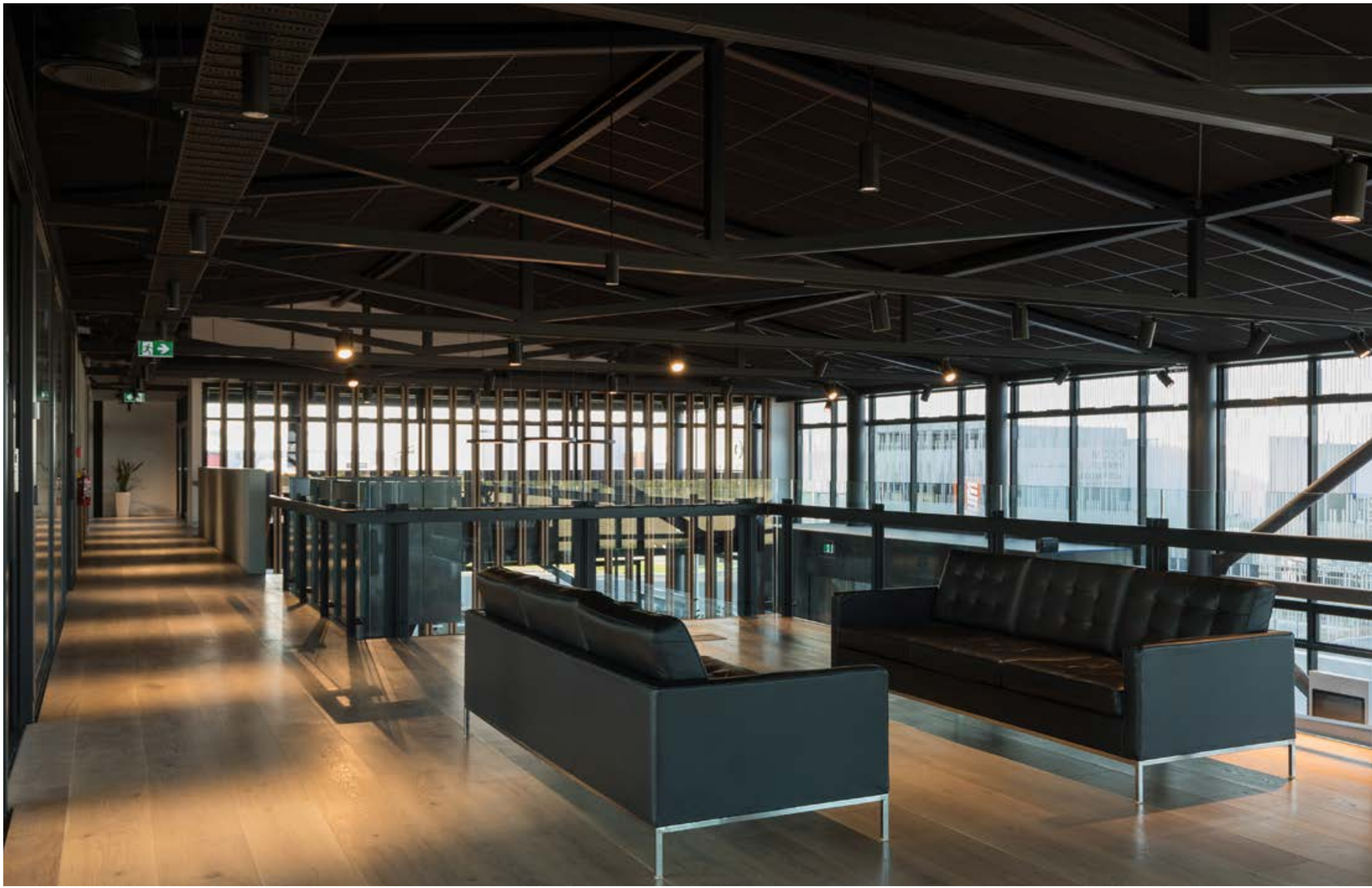
- Engineered to absorb a minimum of 85% of the sound energy it meets
- Can be overlaid with Vertiface for a decorative feature
- Broadband absorber

Applications

- Refined acoustic surface for framed modular office partition panelling
- Can be direct fixed to ceilings and walls as a functional and decorative acoustic panel
- Sophisticated, high-performance acoustic panel for sound control in interior spaces

● Blum,
New Zealand

● QuietSpace Panel
in Nude Black



Customization

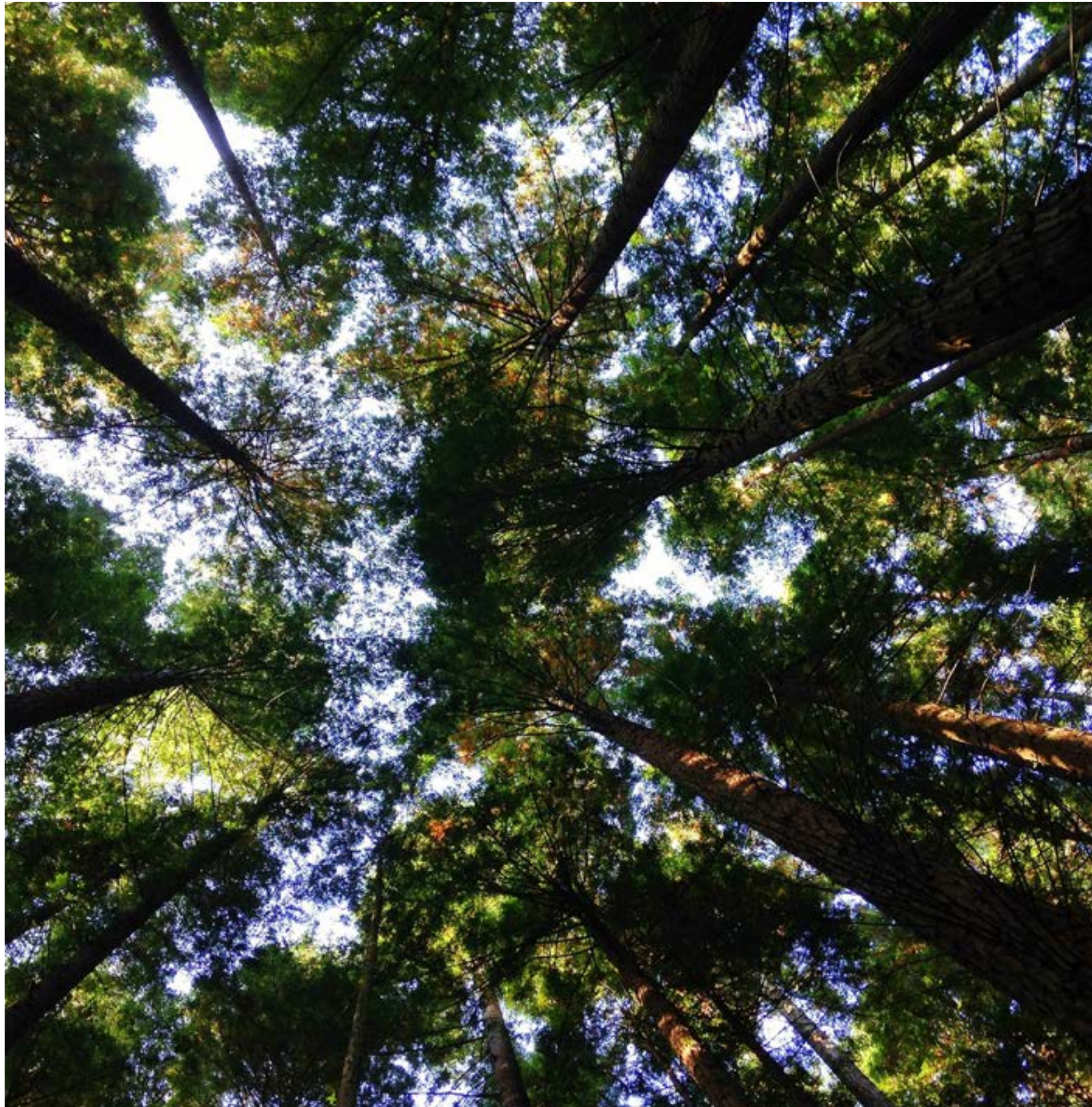
As creators and innovators, we understand your pursuit of the bold and unusual, the rare and exceptional—the brave, color-outside-the-lines ideas. Every space you design is unique, therefore, every element—from floor to ceiling—should be tailored to fit. Our customization tools offer unique avenues for creative expression to help you achieve your vision—all that's left to explore are the boundaries of your imagination.

Our customization capabilities include Print, Etch™, Groove, Precision Cut, Mold and Press, and Peel 'n' Stick.



● Quietspace Panel faced with Vertiface
in Phantom, Charcoal, Myst, Silver, and Empire

● Adobe,
New Zealand



Caring for the environment

Quietspace Panel is manufactured using 100% polyester fibre and contains a minimum of 45% recycled fibre (from PET plastics). Our products are designed to be recycled at the end of their life too.

We have continual improvement programmes in which we implement a range of initiatives to mitigate the environmental 'hotspots' that we have identified. Our products are GreenRate Level A, Health Product Declaration (HPD), and CDHP Standard certified.

Quietspace Panel is DeclareSM certified to be Red List free and can be used in Living Building Challenge projects. Autex has a high functioning Environmental Management System (ISO 14001) to enhance our environmental performance and contribute to sustainable development.



Declare.



● **Autex Industries Ltd**

702-718 Rosebank Rd
Private Bag 19988
Avondale 1746, Auckland
New Zealand
Freephone 0800 428 839
Phone +64 9 828 9179
Fax +64 9 828 5810

● **Autex Australia Pty Ltd**

166 Bamfield Road
PO Box 5099
West Heidelberg, Melbourne
VIC 3081, Australia
Freephone 1800 678 160
Phone +61 3 9457 6700
Fax +61 3 9457 1020

● **Autex Acoustics Ltd**

Unit J4, Lowfields Way,
Lowfields Business Park,
Elland, West Yorkshire
Hx5 9Da
United Kingdom
Phone +44 0 1422418899

● **Autex Acoustics LLC**

19350 Van Ness Avenue
Torrance, CA 90501
United States of America
Phone +1 424 203 1813

An ISO 9001, ISO 14001 and ISO 45001 certified company. The brand names and logos mentioned herein are registered or unregistered trademarks either owned or used under license by Autex Industries Limited or other members of the Autex Group. The contents of this document are protected by Copyright 2021 Autex Industries Ltd. All Rights Reserved. It is the user's responsibility to determine if the product and information presented in this document is suitable for the intended application by engaging a suitably qualified consultant. The information contained in this document is correct to the best of our knowledge at the date of its publication. To verify that this document is the most current publication please check our website or contact your Autex account manager.