

TM

Loch™

● Loch™
in Flatiron

● Flexigroup,
New Zealand



Your personal oasis

As a simple, slide-on acoustic desk divider, Loch™ allows you to create dedicated, semi-permanent focus zones and personal space boundaries in open-plan environments. Designed to slide on and off desks without additional fixings, Loch moves with you—sheltering you from distraction for just as long as you need it to. Loch is lightweight, strong, and made from 100% polyester fiber, offering excellent acoustic absorption and easy handling.

To find out more about Loch visit www.autexglobal.com

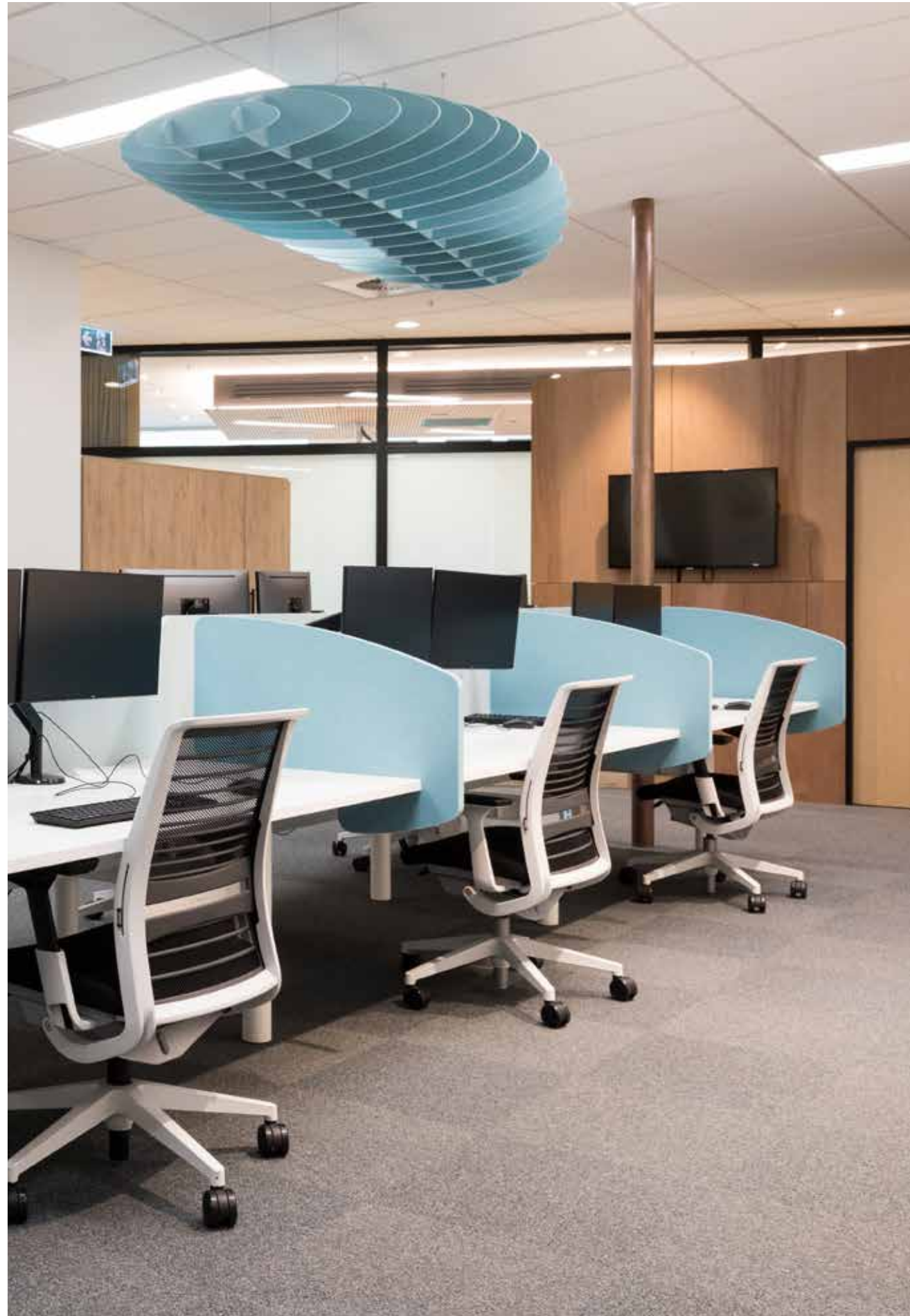


Features and benefits

- Delivers excellent acoustic performance
- Solid color and smooth finish, no capping required
- Pinnable surface
- UV resistant qualities
- Easy to clean
- Customizable
- Easy to install and move
- Made from compressed 100% polyester felt and does not contain formaldehyde, crystalline silica, or other carcinogens
- Low VOC—beneficial for IEQ
- High recycled polyester content
- Highly durable, assuring long-term stability and performance

Applications

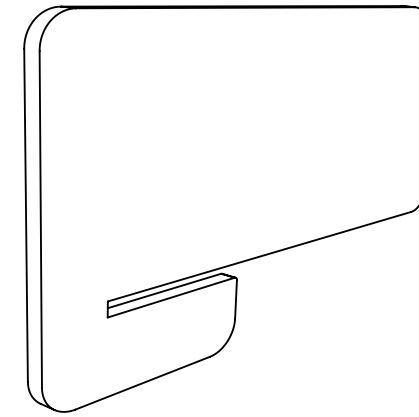
- Suitable for desks 24 mm thick
- Ideal for educational and commercial interiors



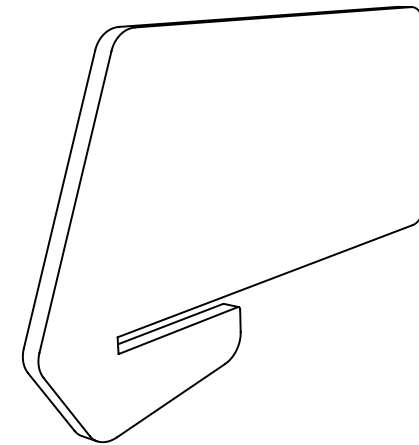
● Goodman,
New Zealand

● Loch
in Falling Water

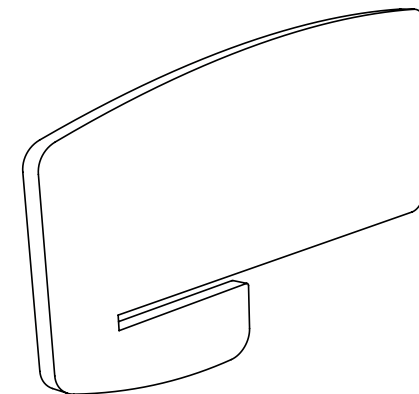
Design options



Classic

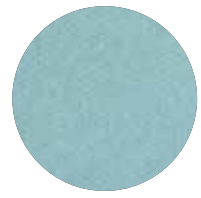


Bevel

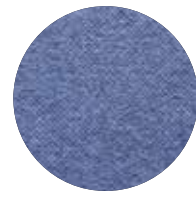


Arc

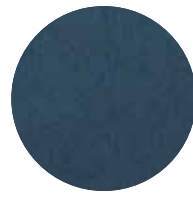
Color options



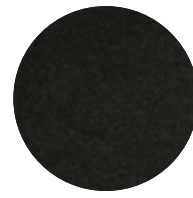
Falling Water



Galaxy



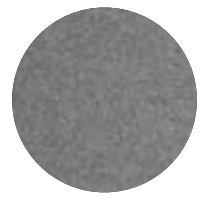
Pinnacle



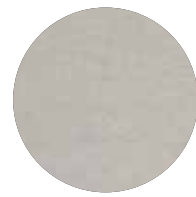
Petronas



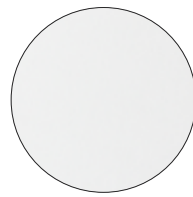
Empire



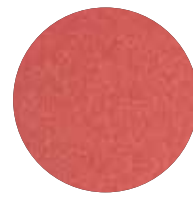
Flatiron



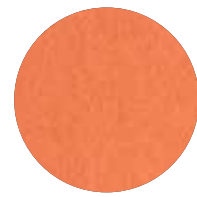
Savoye



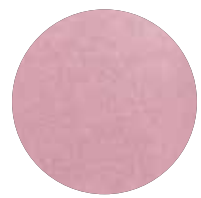
Pavilion



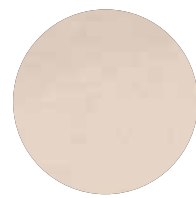
Ironbank



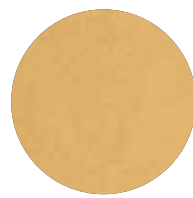
Zenith



Rosada



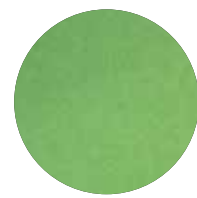
Opera



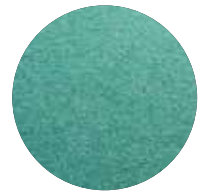
Senado



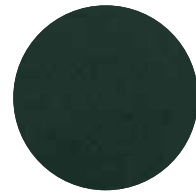
Acros



Bosco



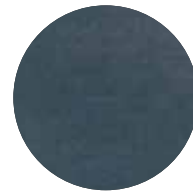
Lotus



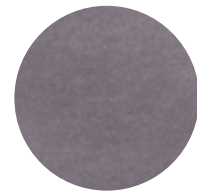
Tree House



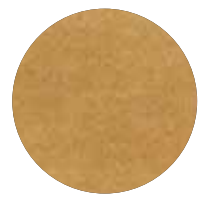
Gherkin



Muralla



Cavalier



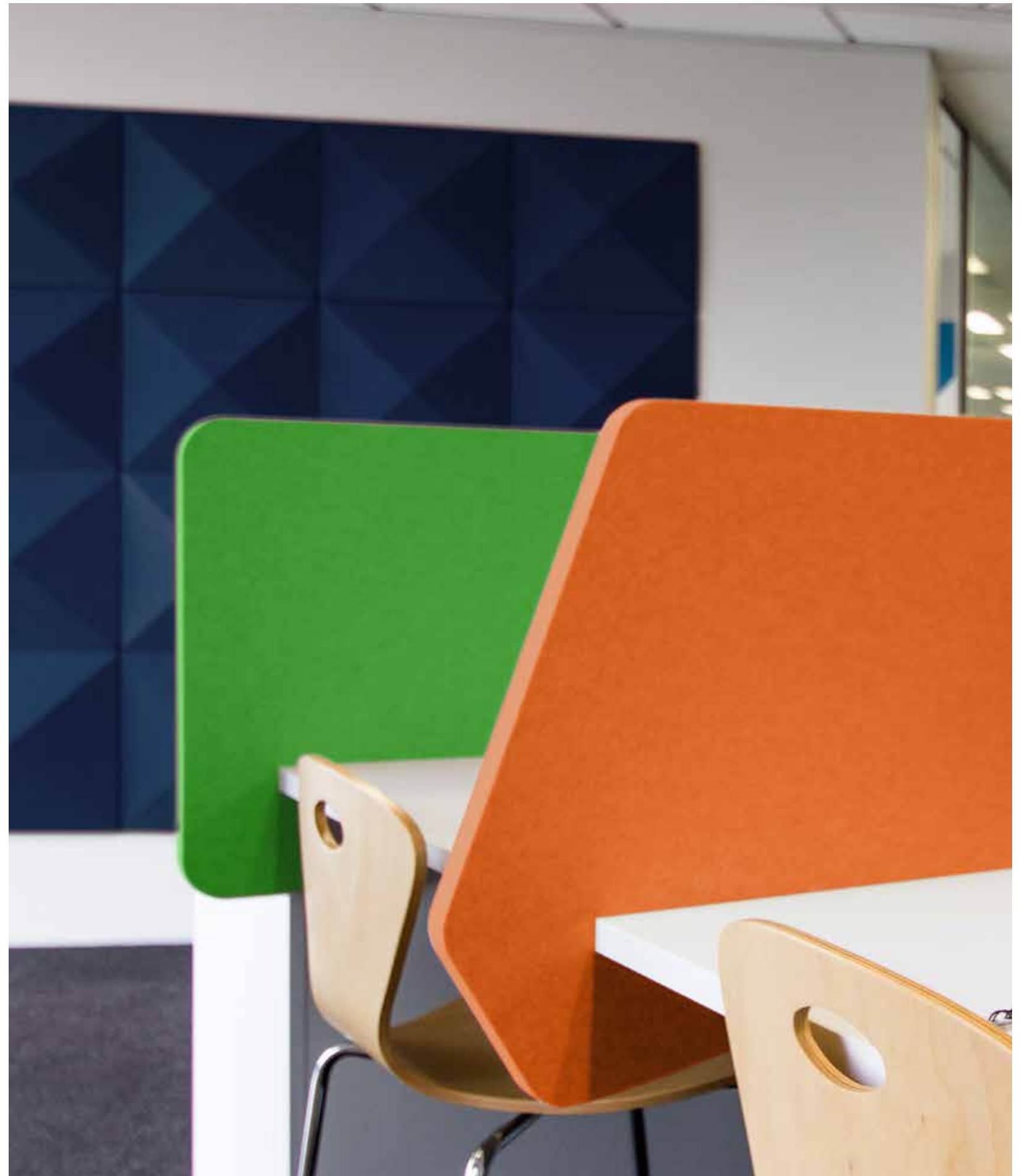
Beehive



Parthenon



Sargazo





Caring for the environment

Loch is manufactured using 100% polyester fiber and contains a minimum of 60% recycled fiber (from PET plastics). Our products are designed to be recycled at the end of their life too.

We have continual improvement programmes in which we implement a range of initiatives to mitigate the environmental 'hotspots' that we have identified. Our products are GreenRate Level A, Health Product Declaration (HPD), and CDHP Standard certified.

Loch is made from Cube which is DeclareSM certified to be Red List free and can be used in Living Building Challenge projects. Autex has a high functioning Environmental Management System (ISO 14001) to enhance our environmental performance and contribute to sustainable development.



Declare.



● **Autex Industries Ltd**

702-718 Rosebank Rd
Private Bag 19988
Avondale 1746, Auckland
New Zealand
Freephone 0800 428 839
Phone +64 9 828 9179
Fax +64 9 828 5810

● **Autex Australia Pty Ltd**

166 Bamfield Road
PO Box 5099
West Heidelberg, Melbourne
VIC 3081, Australia
Freephone 1800 678 160
Phone +61 3 9457 6700
Fax +61 3 9457 1020

● **Autex Acoustics Ltd**

Unit J4, Lowfields Way,
Lowfields Business Park,
Elland, West Yorkshire
Hx5 9Da
United Kingdom
Phone +44 0 1422418899

● **Autex Acoustics LLC**

1630 Dan Kipper Dr,
Riverside, CA 92507
United States of America
Phone +1 424 203 1813

An ISO 9001, ISO 14001 and ISO 45001 certified company. The brand names and logos mentioned herein are registered or unregistered trademarks either owned or used under license by Autex Industries Limited or other members of the Autex Group. The contents of this document are protected by Copyright 2021 Autex Industries Ltd. All Rights Reserved. It is the user's responsibility to determine if the product and information presented in this document is suitable for the intended application by engaging a suitably qualified consultant. The information contained in this document is correct to the best of our knowledge at the date of its publication. To verify that this document is the most current publication please check our website or contact your Autex account manager.